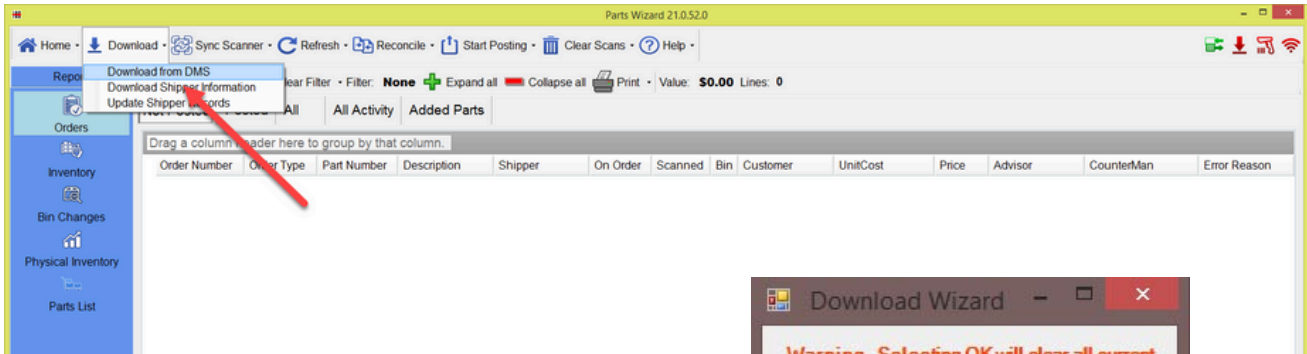


## Table of Contents

- Downloading and Synchronizing Full Inventory
- Starting Up Your Scanner and Navigating to the correct screen

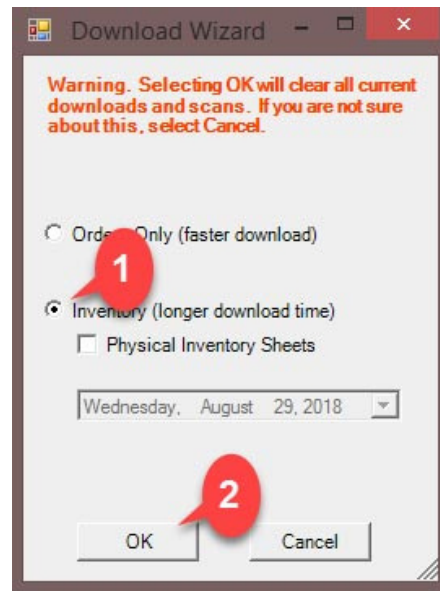
## Downloading Your Inventory and Synchronizing the part numbers onto the Scanner

1. **Open up Parts Wizard** and **select the download button** on the top right-hand corner **Select** the Option from **Download from DMS**

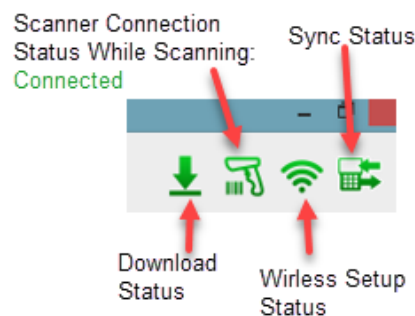


2. On the Download Wizard, Pop Up Box **select the full inventory option**

Parts Wizard will now start to download your full inventory from your DMS and automatically synchronize those part numbers onto the scanner.



Once the Download Status Box has fully disappeared, locate your Download Status and Synchronize Icons on the top right-hand corner and verify that they're green. You can also hover over each icon to display the date and time of each download and synchronization.



## Starting Up and Navigating Your Scanner



### **XG3 (Windows):**

**Hold down** the red power button, **located on the left-side of the scanner at the very top**, until you get the menu options for Hard Reset, Soft Reset, and Power Off. **Select Soft Reset. The scanner will now reboot and launch into PartsWizard on startup.**



### **MC55 (Windows):**

**Hold down** the red power button, **located on the bottom left of the keypad, until the screen turns off.** The scanner will now reload into PartsWizard.



### **XG200 (Android):**

Remove the scanner from the cradle, the scanner will begin decompressing the downloaded files and will automatically launch into Partswizard. **Select the menu option for Scan Order**, and you can now begin scanning your stock orders for today.

*If the scanner isn't on that page, you can launch into the app manually by clicking on the 'ScanWizard' app icon.*



### **XT30 & XT40 (Android):**

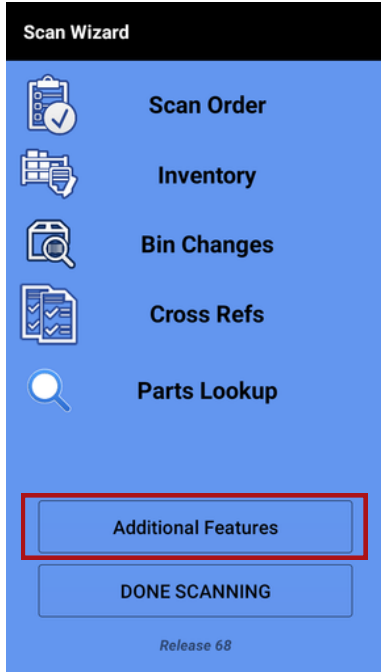
Remove the scanner from the cradle and click on the "Start Scanning" button. The scanner will automatically launch into Partswizard. **Select the menu option for Scan Order**, and you can now begin scanning your stock orders for today.

*If the scanner isn't on that page, you can launch into the app manually by clicking on the 'ScanWizard' app icon.*

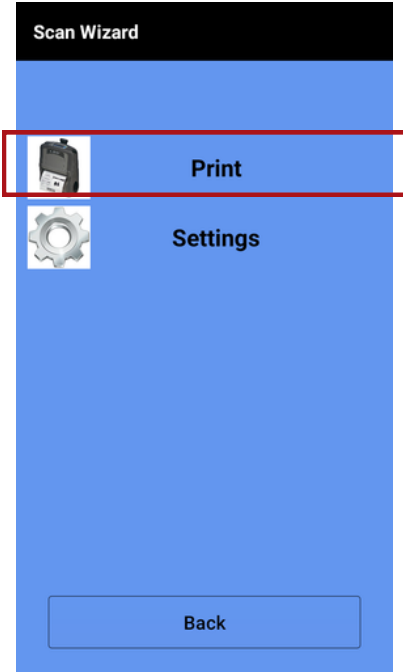
---

## Navigating to the Printing Screen on the Scanner

Once the scanners have loaded into Parts Wizard, tap on the Additional features Button



Select the Print Button

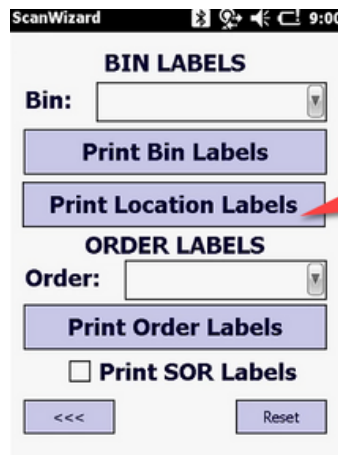


From here, you will have the option to select your bin, print the bin location, and the part numbers inside of that bin.

To print the Part numbers inside of the bin select Print Bin Labels



To print the Bin Location label select the Print Location Label



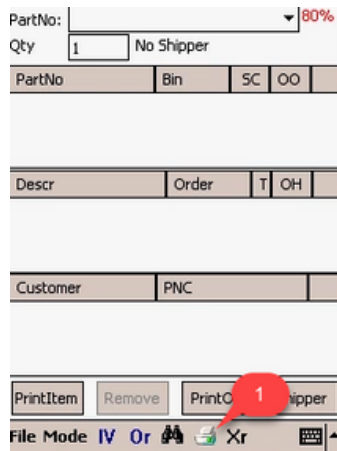
## Starting Up and Navigating Your Scanner



### PPT (Windows):

**Do a 3-button push** by **holding down** either yellow button on the side, the green enter key and the blue function key at the same time. **Continue holding down these buttons until you see a screen flash and display PPT8800**, release the keys.

When the scanner loads into the Parts Wizard screen, click on the Printer Icon located on the bottom right.



The next screen will allow you to select the bin and print the location of that bin, or the part numbers inside of that bin.

To print the part numbers inside of the bin select Print Bin labels



To print the actual bin label for bin organization, select the Print bin location label

