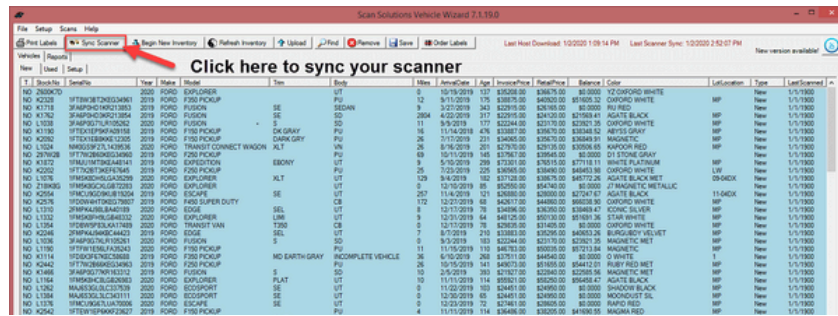


Adding New Vehicles to the DealerTrack DMS (Classic)

Step 1. Place the scanner in the cradle, and hit the sync scanner button in the top left.



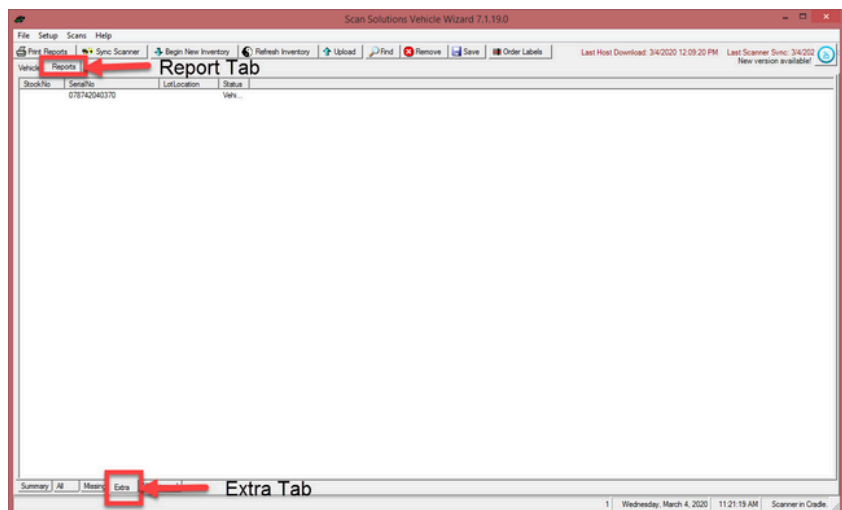
Step 2. Remove the scanner from the cradle and start VehicleWizard.

- If you have an MC55 scanner, this would be holding down the red power button until the scanner turns off. Let go, and it should turn back on automatically. It will eventually launch into VehicleWizard after a couple of minutes.
- If you have a Janam Scanner, hold down the red power button on the left-hand side, at the top. Hold this down until a menu displays on the screen, and choose "Soft Reset". This will restart the scanner, and after a couple of minutes, it will launch into VehicleWizard.
- If you have a Symbol Scanner, hold down one of the yellow buttons on the side of the scanner, the green enter button, and the blue function button at the same time. You should get a screen that says PPT 8800, upon seeing this screen, you can release the button. This will restart the scanner, and after a couple of minutes, it will launch into VehicleWizard.

Step 3. Scan the new car, make sure to hit enter on the final car.

Step 4. Place the scanner back in the cradle and hit the sync scanner button again

Step 5. Navigate to the Reports Tab, near the top left. Then navigate to the "Extra" tab, towards the bottom left.



Step 6. Right-click each vehicle individually, selecting the 'Add to DMS' option. This will allow you to fill in important information about the vehicle. Once you're finished, click okay. This will upload it to your DMS as a new vehicle in inventory.